

Windham High School: 2017 NH YRBS Preliminary Report

Sexual Risk Behaviors: Time Trends, By Sex, and By Grade

Windham High School is in the Greater Derry Public Health Region and is served by the Bridges crisis center.

PRELIMINARY RESULTS (v1.2)

This report contains preliminary results for 2017. All 2017 results are subject to change when the CDC returns the final dataset to the State, expected in early 2018. Please use caution when referring to and using these preliminary data until the final data set is received from the CDC. This report contains results for all questions asked on any YRBS survey since 2007. Note, access to regional level results were first made available in 2015 and are not available prior to that year.

State and Regional Estimates

State and Regional estimates are calculated from a random sample developed using scientific survey methods. These methods ensure the respondents are representative of students in the region in the State. These estimates account for student, classroom, school, and regional factors. The random sample is not designed to provide school level estimates.

School Level Estimates

The 2017 survey response rate at Windham High School was 87% where 786 of 901 students took the survey. **School level estimates are unweighted and based on a convenience sample of students in attendance, and not opting out of participation in the YRBS, on a given date and time during the school year.** However, because participation was relatively high the school estimates may still be representative of the entire school population. Results could be less representative if specific classrooms or classroom types were not included in the survey. We have attempted to estimate how many students in the school actually fall within each risk category. We did this by scaling up the students responding in the survey using school enrollment data.

Estimates number and percentage were suppressed (*) if the underlying sample size was <60 respondents and/or cell sizes are between 1 and 5.

Help and assistance

Questions on this report (NH YRBS Community level preliminary report)

Health Statistics and Data Management

Division of Public Health Services - State of NH

NH.YouthRiskBehaviorSurvey@dhhs.nh.gov; (603) 271-4988;

Additional technical assistance for YRBS related information

NH Center for Excellence

nhcenterforexcellence@jsi.com; (603) 573-3300

<http://nhcenterforexcellence.org/center-services/request-ta/>

Change Log

v1.2: Indicators revised to display by CDC question direction as greater risk; and, revised methodology to more accurately display number of students projected based on school enrollment data.

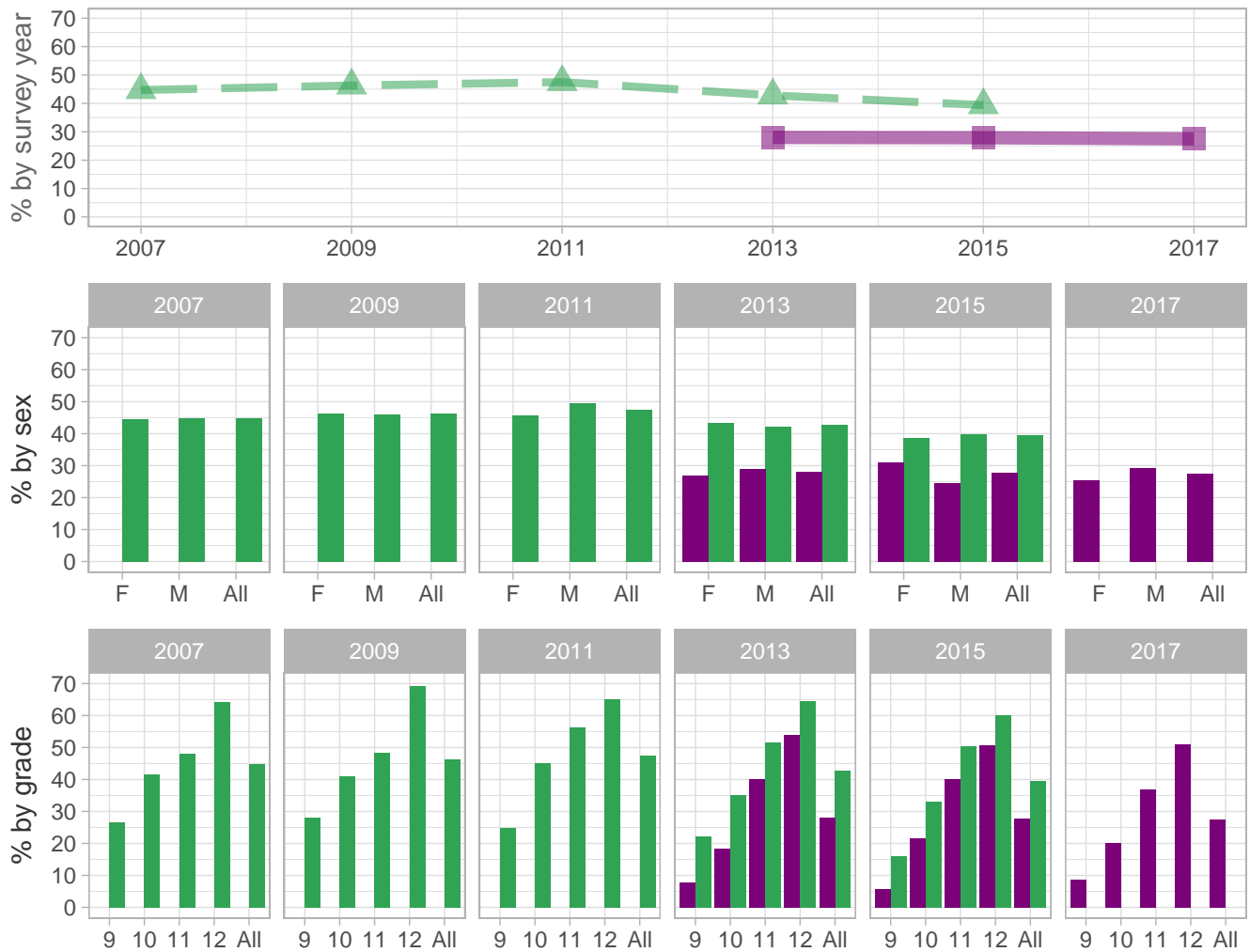
v1.1: School estimates corrected to include CDC sample - report sent 8/31-9/1

v1.0: Initial report sent 8/29

 School
  Region
  NH

Sexual Risk Behaviors

Percent of students who ever had sexual intercourse



School-level by Sex and Grade

		2009(pct)	2011(pct)	2013(pct)	2015(pct)	2017(pct)	2017(n)
By sex	F	-	*	26.9	30.9	25.3	109
	M	-	*	29.0	24.5	29.2	135
By grade	9th	-	*	7.7	5.8	8.6	23
	10th	-	*	18.3	21.5	20.0	45
	11th	-	-	40.1	40.1	37.0	82
	12th	-	-	53.8	50.6	51.0	96
All	All	-	*	28.0	27.9	27.5	248

How the question was actually asked: Have you ever had sexual intercourse?; a: Yes ; b: No;

Percent (pct): numerator: a; denominator: ab; qid: 52; 2007q52; 2009q52; 2011q55; 2013q57; 2015q54; 2017q54;

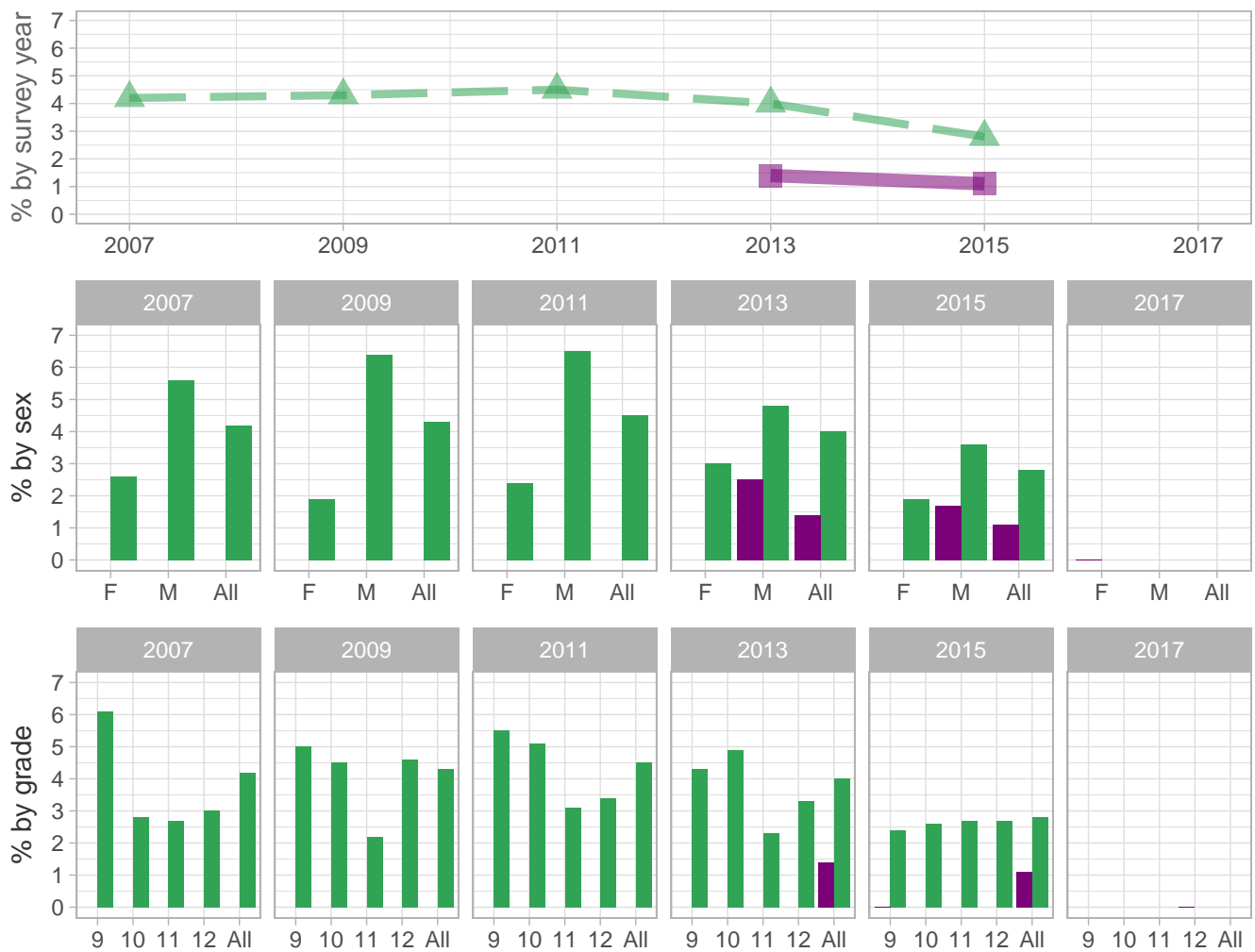
Number (n): Estimated number of students projected based on school enrollment data.

-: Data not available; *: Suppressed due to small cell sizes.

 School  Region  NH

Sexual Risk Behaviors

Percent of students who had sexual intercourse (for the first time) before age 13 years



School-level by Sex and Grade

		2009(pct)	2011(pct)	2013(pct)	2015(pct)	2017(pct)	2017(n)
By sex	F	-	*	*	*	0.0	0
	M	-	*	2.5	1.7	*	*
By grade	9th	-	*	*	0.0	*	*
	10th	-	*	*	*	*	*
	11th	-	-	*	*	*	*
	12th	-	-	*	*	0.0	0
All	All	-	*	1.4	1.1	*	*

How the question was actually asked: How old were you when you had sexual intercourse for the first time?; a: I have never had sexual intercourse ; b: 11 years old or younger ; c: 12 years old ; d: 13 years old ; e: 14 years old ; f: 15 years old ; g: 16 years old ; h: 17 years old or older;

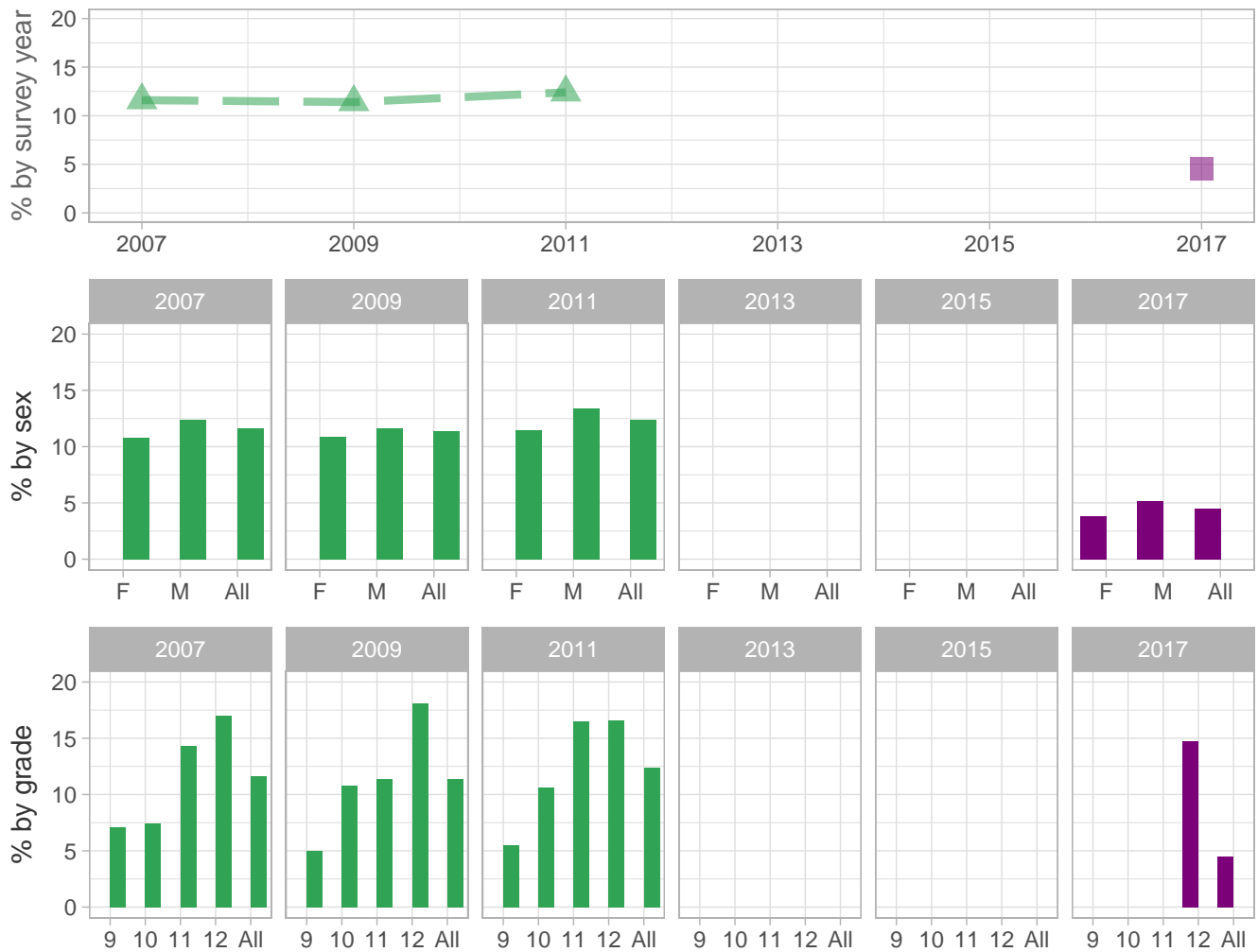
Percent (pct): numerator: bc; denominator: abcdefgh; qid: 53; 2007q53; 2009q53; 2011q56; 2013q58; 2015q55; 2017q55; Number (n): Estimated number of students projected based on school enrollment data.

-: Data not available; *: Suppressed due to small cell sizes.

 School  Region  NH

Sexual Risk Behaviors

Percent of students who had sexual intercourse with four or more people during their life



School-level by Sex and Grade

		2009(pct)	2011(pct)	2013(pct)	2015(pct)	2017(pct)	2017(n)
By sex	F	-	*	-	-	3.8	17
	M	-	*	-	-	5.2	25
By grade	9th	-	*	-	-	*	*
	10th	-	*	-	-	*	*
	11th	-	-	-	-	*	*
	12th	-	-	-	-	14.7	28
All	All	-	*	-	-	4.5	41

How the question was actually asked: During your life, with how many people have you had sexual intercourse?; a: I have never had sexual intercourse ; b: 1 person ; c: 2 people ; d: 3 people ; e: 4 people ; f: 5 people ; g: 6 or more people;

Percent (pct): numerator: efg; denominator: abcdefg; qid: 54; 2007q54; 2009q54; 2011q57; 2013q999; 2015q999; 2017q56;

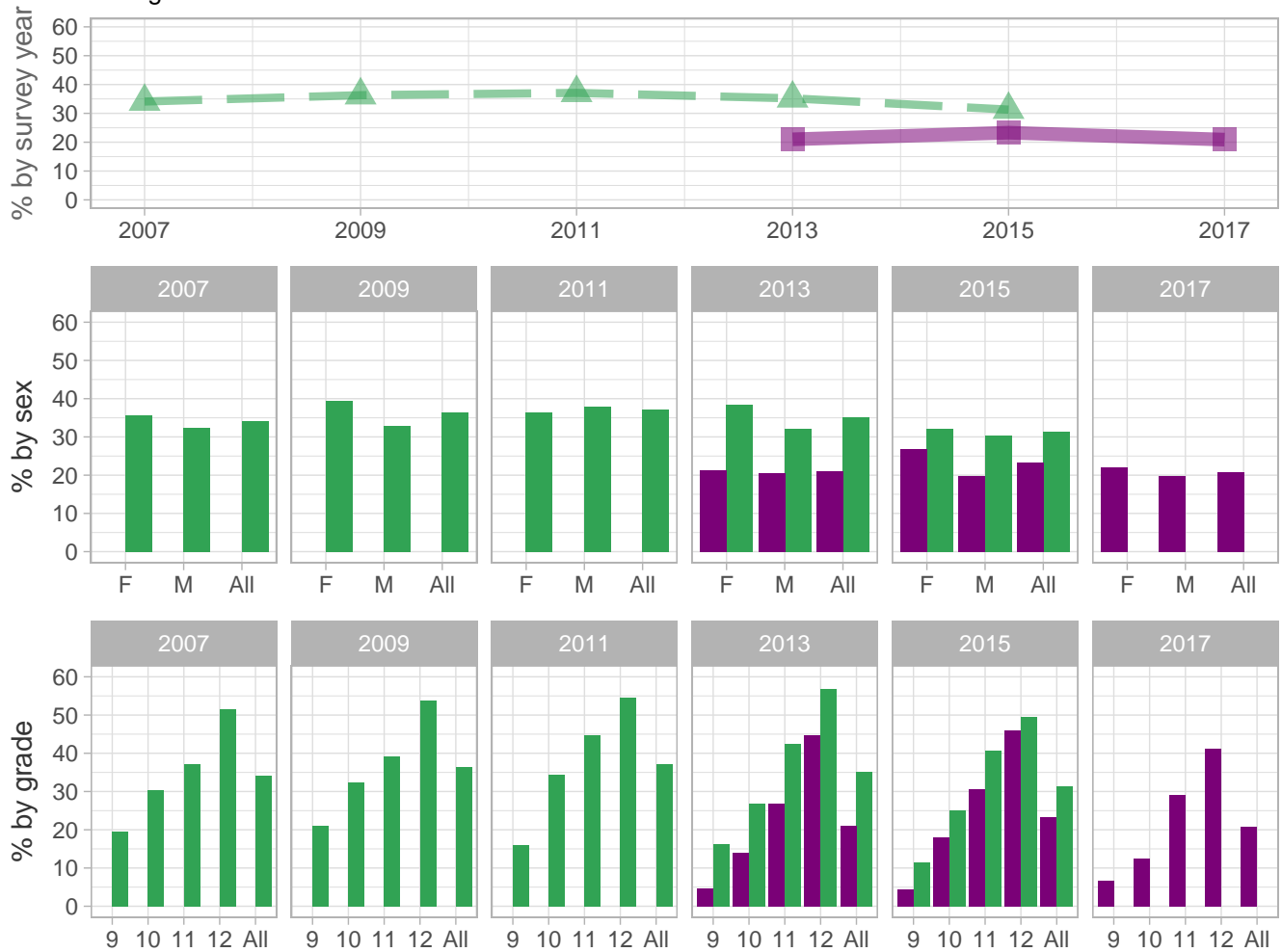
Number (n): Estimated number of students projected based on school enrollment data.

-: Data not available; *: Suppressed due to small cell sizes.

 School
  Region
  NH

Sexual Risk Behaviors

Percent of students who were sexually active (had sexual intercourse with at least one person) during the 3 months



School-level by Sex and Grade

		2009(pct)	2011(pct)	2013(pct)	2015(pct)	2017(pct)	2017(n)
By sex	F	-	*	21.4	26.8	22.1	96
	M	-	*	20.5	19.9	19.7	91
By grade	9th	-	*	4.7	4.4	6.7	18
	10th	-	*	14.0	18.1	12.4	28
	11th	-	-	26.9	30.5	29.0	64
	12th	-	-	44.7	46.1	41.2	79
All	All	-	*	21.0	23.3	20.9	189

How the question was actually asked: During the past 3 months, with how many people did you have sexual intercourse?; a: I have never had sexual intercourse ; b: I have had sexual intercourse, but not during the past 3 months ; c: 1 person ; d: 2 people ; e: 3 people ; f: 4 people ; g: 5 people ; h: 6 or more people;

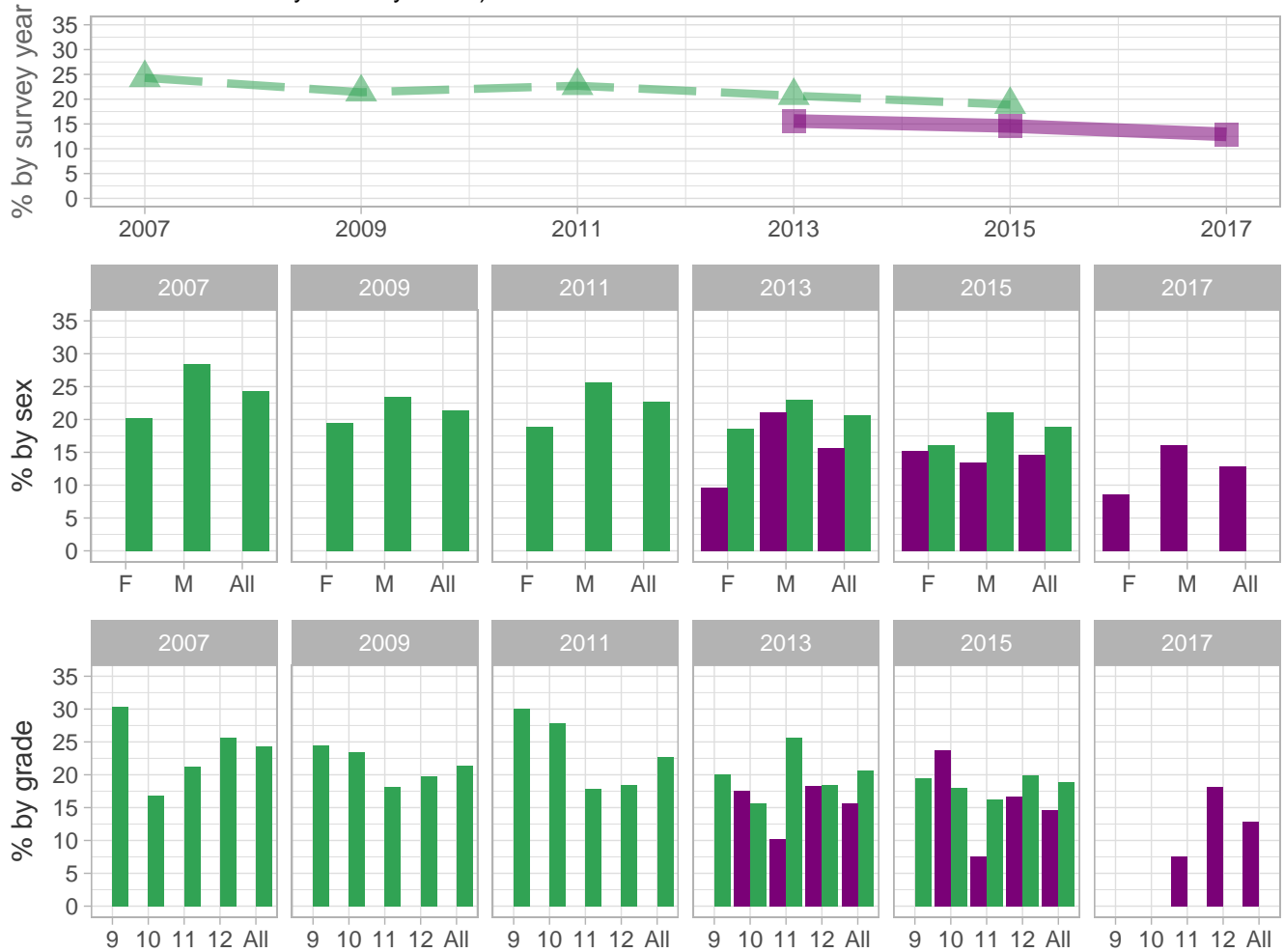
Percent (pct): numerator: cdefgh; denominator: abcdefgh; qid: 55; 2007q55; 2009q55; 2011q58; 2013q59; 2015q56; 2017q57; Number (n): Estimated number of students projected based on school enrollment data.

-: Data not available; *: Suppressed due to small cell sizes.

 School
  Region
  NH

Sexual Risk Behaviors

Percent of students who drank alcohol or used drugs before last sexual intercourse (among students who were currently sexually active)



School-level by Sex and Grade

		2009(pct)	2011(pct)	2013(pct)	2015(pct)	2017(pct)	2017(n)
By sex	F	-	*	9.6	15.2	8.6	10
	M	-	-	21.1	13.5	16.1	22
By grade	9th	-	-	*	*	*	*
	10th	-	*	17.6	23.7	*	*
	11th	-	-	10.2	7.5	7.5	6
	12th	-	-	18.3	16.7	18.1	18
All	All	-	*	15.6	14.6	12.9	33

How the question was actually asked: Did you drink alcohol or use drugs before you had sexual intercourse the last time?; a: I have never had sexual intercourse ; b: Yes ; c: No;

Percent (pct): numerator: b; denominator: bc; qid: 56; 2007q56; 2009q56; 2011q59; 2013q60; 2015q57; 2017q58;

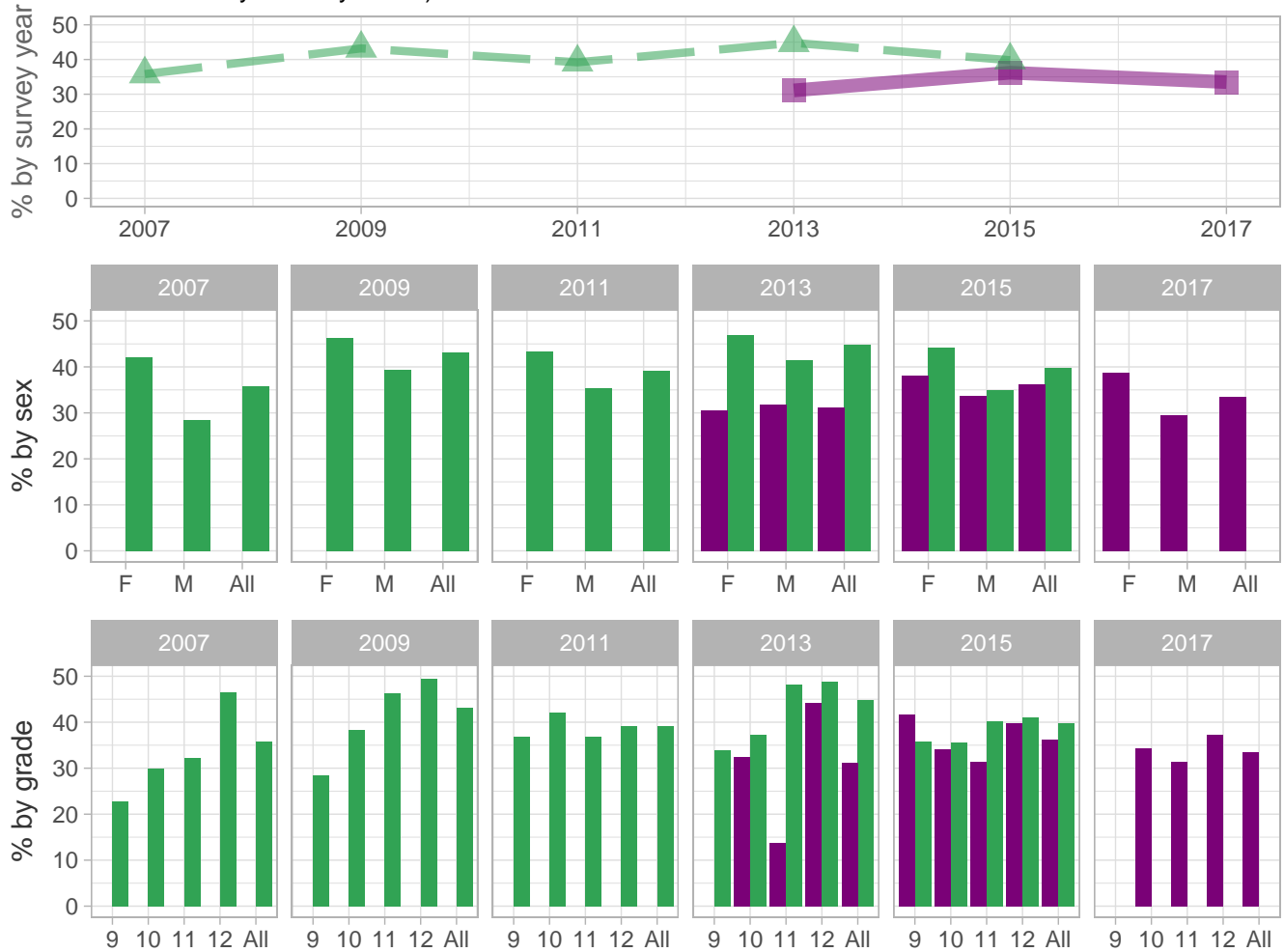
Number (n): Estimated number of students projected based on school enrollment data.

-: Data not available; *: Suppressed due to small cell sizes.

 School  Region  NH

Sexual Risk Behaviors

Percent of students who did not use a condom during last sexual intercourse (among students who were currently sexually active)



School-level by Sex and Grade

		2009(pct)	2011(pct)	2013(pct)	2015(pct)	2017(pct)	2017(n)
By sex	F	-	*	30.5	38.1	38.7	44
	M	-	-	31.9	33.7	29.4	39
By grade	9th	-	-	*	41.7	*	*
	10th	-	*	32.4	34.2	34.3	15
	11th	-	-	13.8	31.3	31.3	26
	12th	-	-	44.3	39.7	37.3	38
All	All	-	*	31.1	36.2	33.5	84

How the question was actually asked: The last time you had sexual intercourse, did you or your partner use a condom?; a: I have never had sexual intercourse ; b: Yes ; c: No;

Percent (pct): numerator: c; denominator: bc; qid: 57; 2007q57; 2009q57; 2011q60; 2013q61; 2015q58; 2017q59;

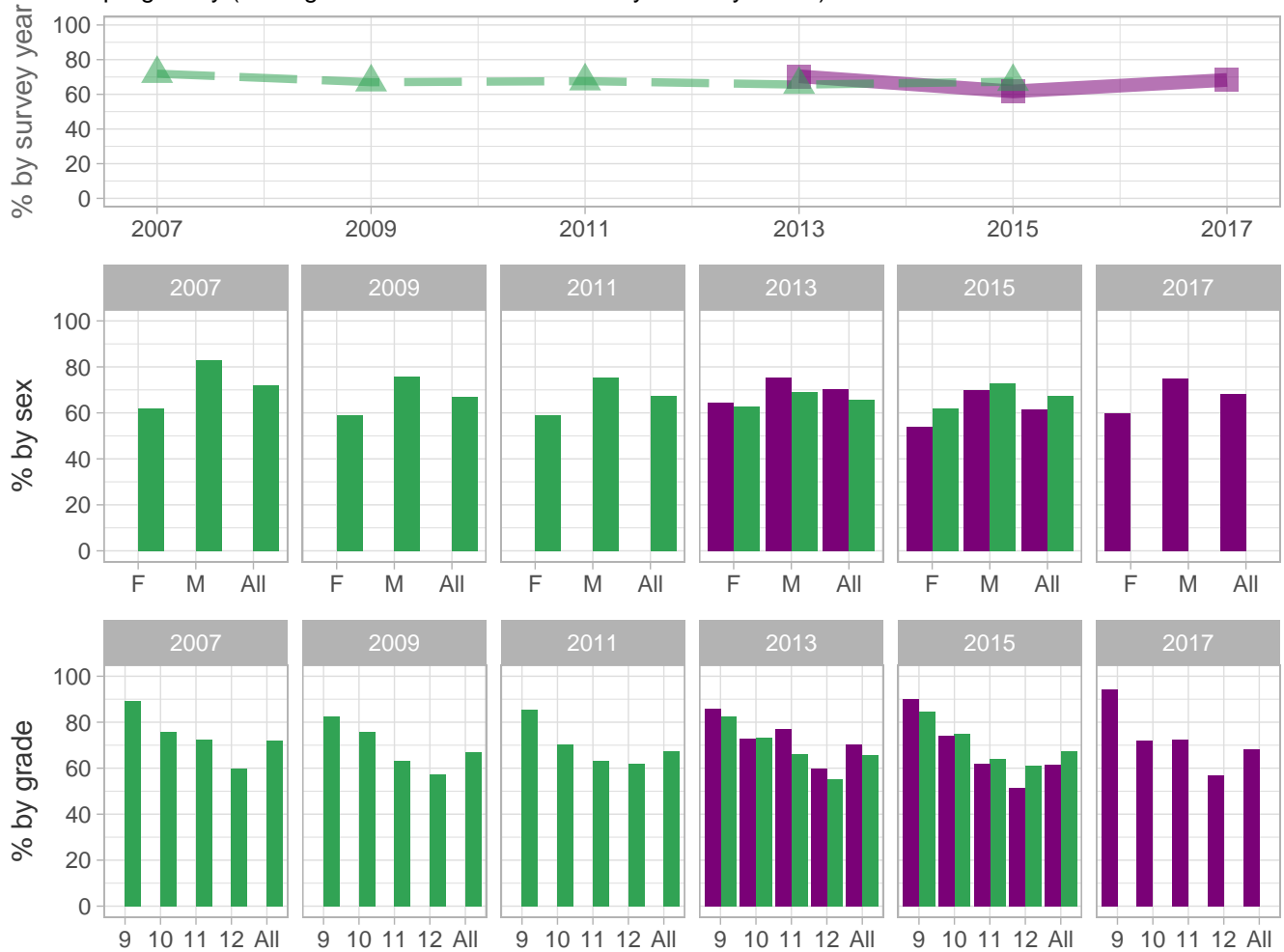
Number (n): Estimated number of students projected based on school enrollment data.

-: Data not available; *: Suppressed due to small cell sizes.

 School
  Region
  NH

Sexual Risk Behaviors

Percent of students who did not use birth control pills before last sexual intercourse to prevent pregnancy (among students who were currently sexually active)



School-level by Sex and Grade

		2009(pct)	2011(pct)	2013(pct)	2015(pct)	2017(pct)	2017(n)
By sex	F	-	*	64.5	54.0	59.8	67
	M	-	-	75.3	69.9	74.8	94
By grade	9th	-	-	85.7	90.0	94.1	20
	10th	-	*	72.7	74.3	72.2	32
	11th	-	-	76.9	61.9	72.6	55
	12th	-	-	59.7	51.3	56.8	56
All	All	-	*	70.4	61.7	68.3	165

How the question was actually asked: The last time you had sexual intercourse, what one method did you or your partner use to prevent pregnancy? (Select only one response.); a: I have never had sexual intercourse ; b: No method was used to prevent pregnancy ; c: Birth control pills ; d: Condoms ; e: An IUD (such as Mirena or ParaGard) or implant (such as Implanon or Nexplanon) ; f: A shot (such as Depo-Provera), patch (such as Ortho Evra), or birth control ring (such as NuvaRing) ; g: Withdrawal or some other method ; h: Not sure;

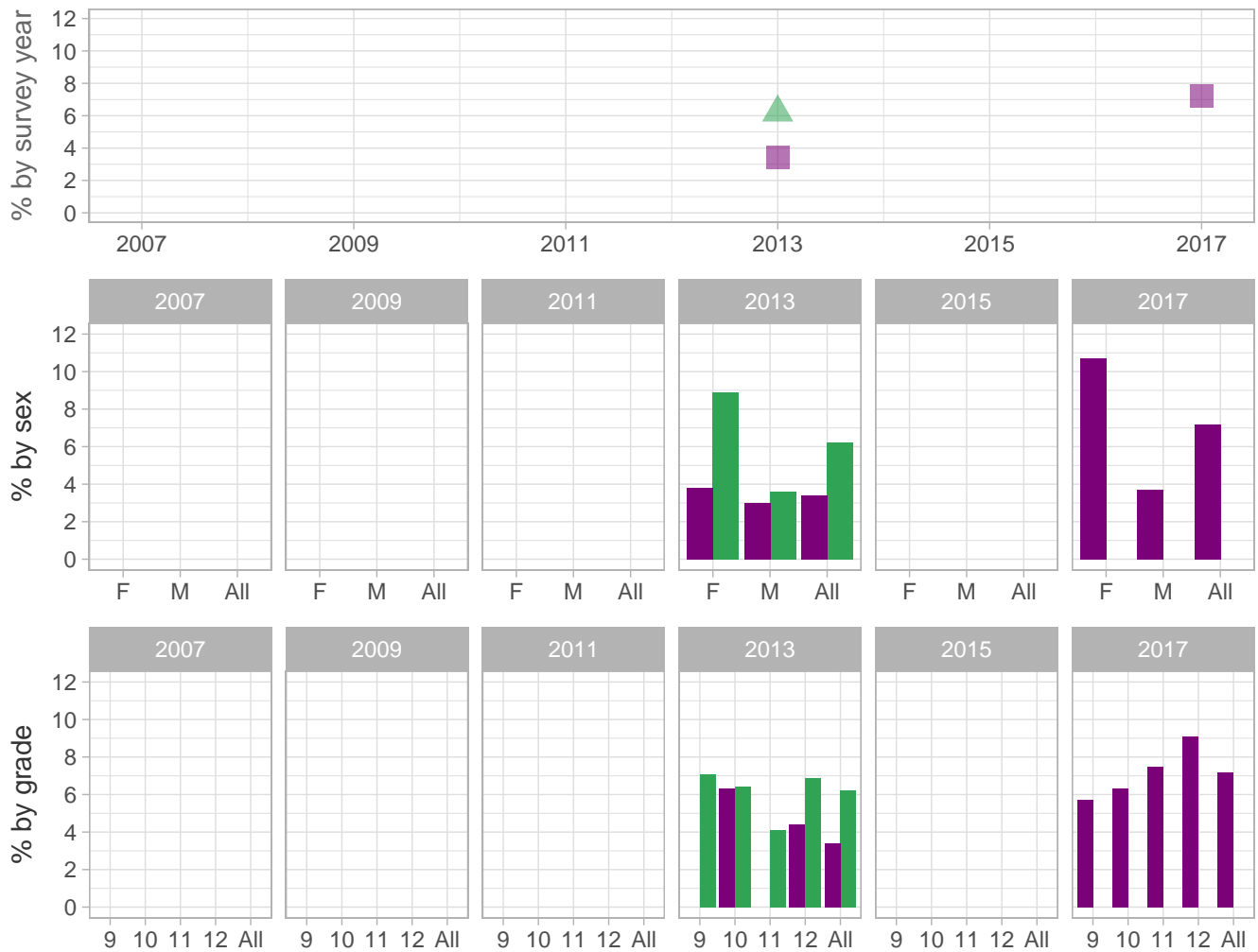
Percent (pct): numerator: bdefgh; denominator: bcdefgh; qid: 58; 2007q58; 2009q58; 2011q61; 2013q62; 2015q59; 2017q60; Number (n): Estimated number of students projected based on school enrollment data.

-: Data not available; *: Suppressed due to small cell sizes.

 School  Region  NH

Sexual Risk Behaviors

Percent of students who were gay, lesbian, or bisexual



School-level by Sex and Grade

		2009(pct)	2011(pct)	2013(pct)	2015(pct)	2017(pct)	2017(n)
By sex	F	-	-	3.8	-	10.7	46
	M	-	-	3.0	-	3.7	18
By grade	9th	-	-	*	-	5.7	16
	10th	-	-	6.3	-	6.3	14
	11th	-	-	*	-	7.5	17
	12th	-	-	4.4	-	9.1	18
All	All	-	-	3.4	-	7.2	66

How the question was actually asked: Which of the following best describes you?; a: Heterosexual (straight) ; b: Gay or lesbian ; c: Bisexual ; d: Not sure;

Percent (pct): numerator: bc; denominator: abcd; qid: 156; 2007q999; 2009q999; 2011q999; 2013q64; 2015q999; 2017q62;

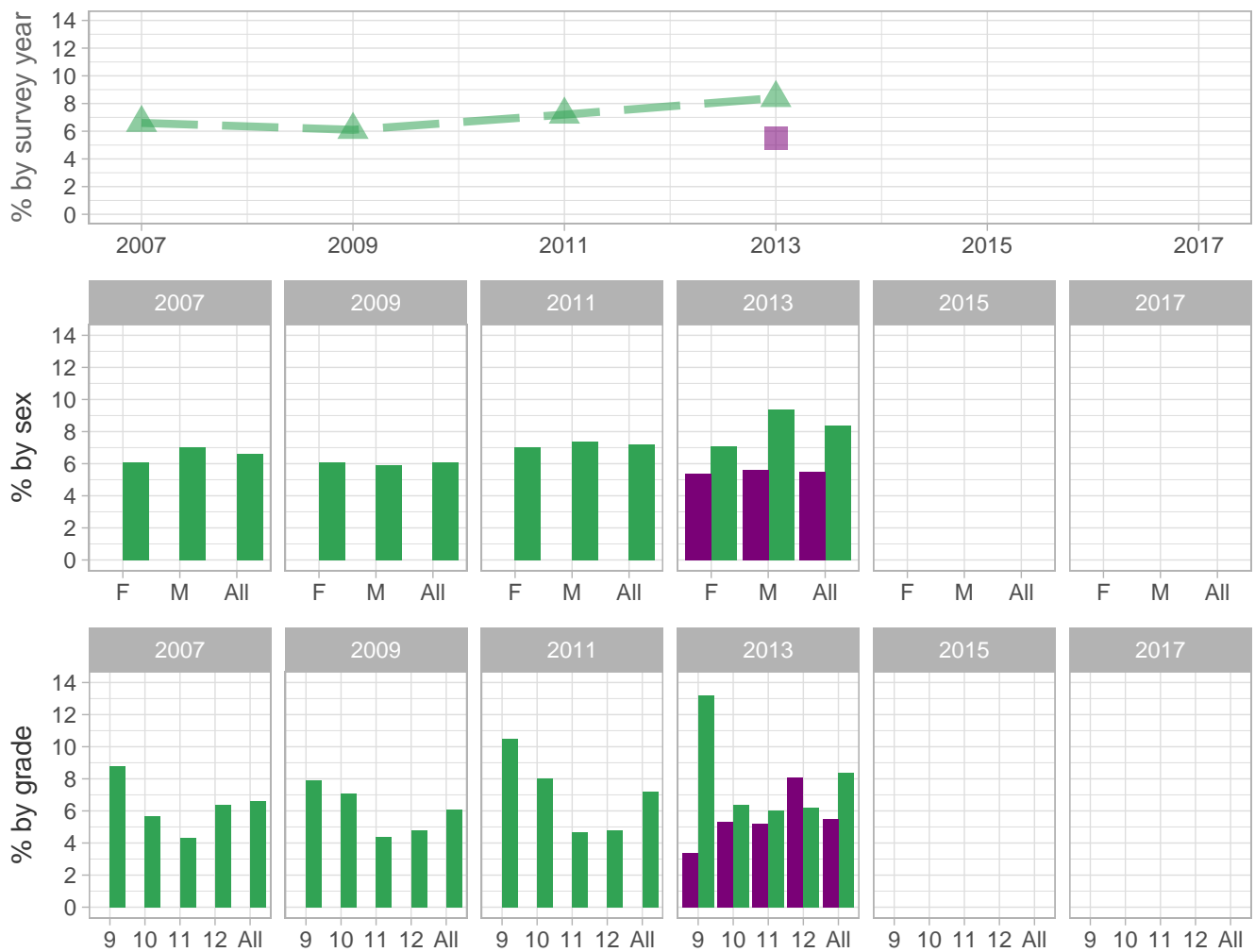
Number (n): Estimated number of students projected based on school enrollment data.

-: Data not available; *: Suppressed due to small cell sizes.

 School
  Region
  NH

Sexual Risk Behaviors

Percent of students who had never been taught in school about AIDS or HIV infection



School-level by Sex and Grade

		2009(pct)	2011(pct)	2013(pct)	2015(pct)	2017(pct)	2017(n)
By sex	F	-	*	5.4	-	-	-
	M	-	*	5.6	-	-	-
By grade	9th	-	*	3.4	-	-	-
	10th	-	*	5.3	-	-	-
	11th	-	-	5.2	-	-	-
	12th	-	-	8.1	-	-	-
All	All	-	*	5.5	-	-	-

How the question was actually asked: Have you ever been taught about AIDS or HIV infection in school?; a: Yes; b: No; c: Not sure;

Percent (pct): numerator: b; denominator: abc; qid: 72; 2007q72; 2009q74; 2011q71; 2013q71; 2015q999; 2017q999;

Number (n): Estimated number of students projected based on school enrollment data.

-: Data not available; *: Suppressed due to small cell sizes.